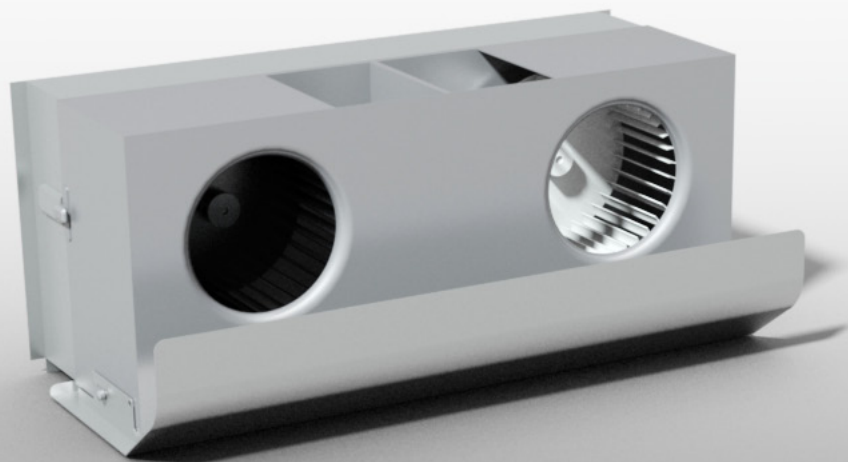




Magic Lung[®] Blower

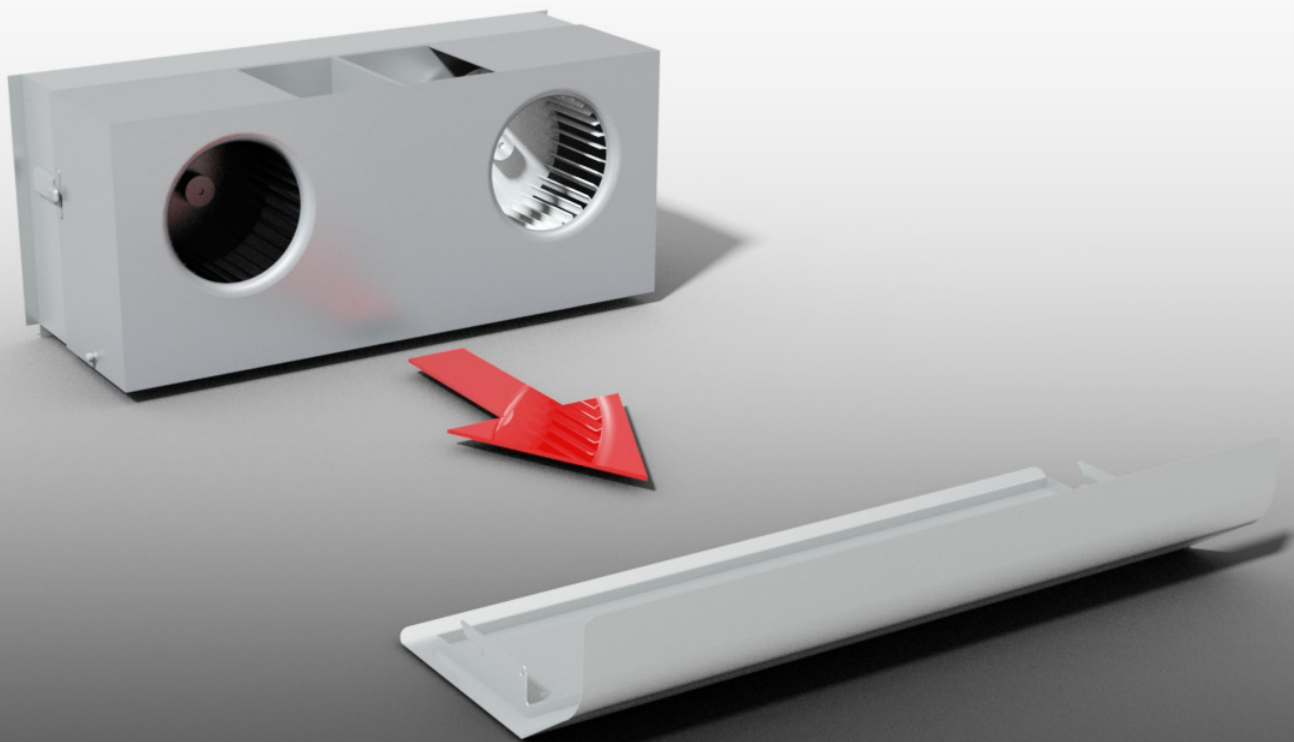
How to Clean

For models starting with B100, B200, and T200.



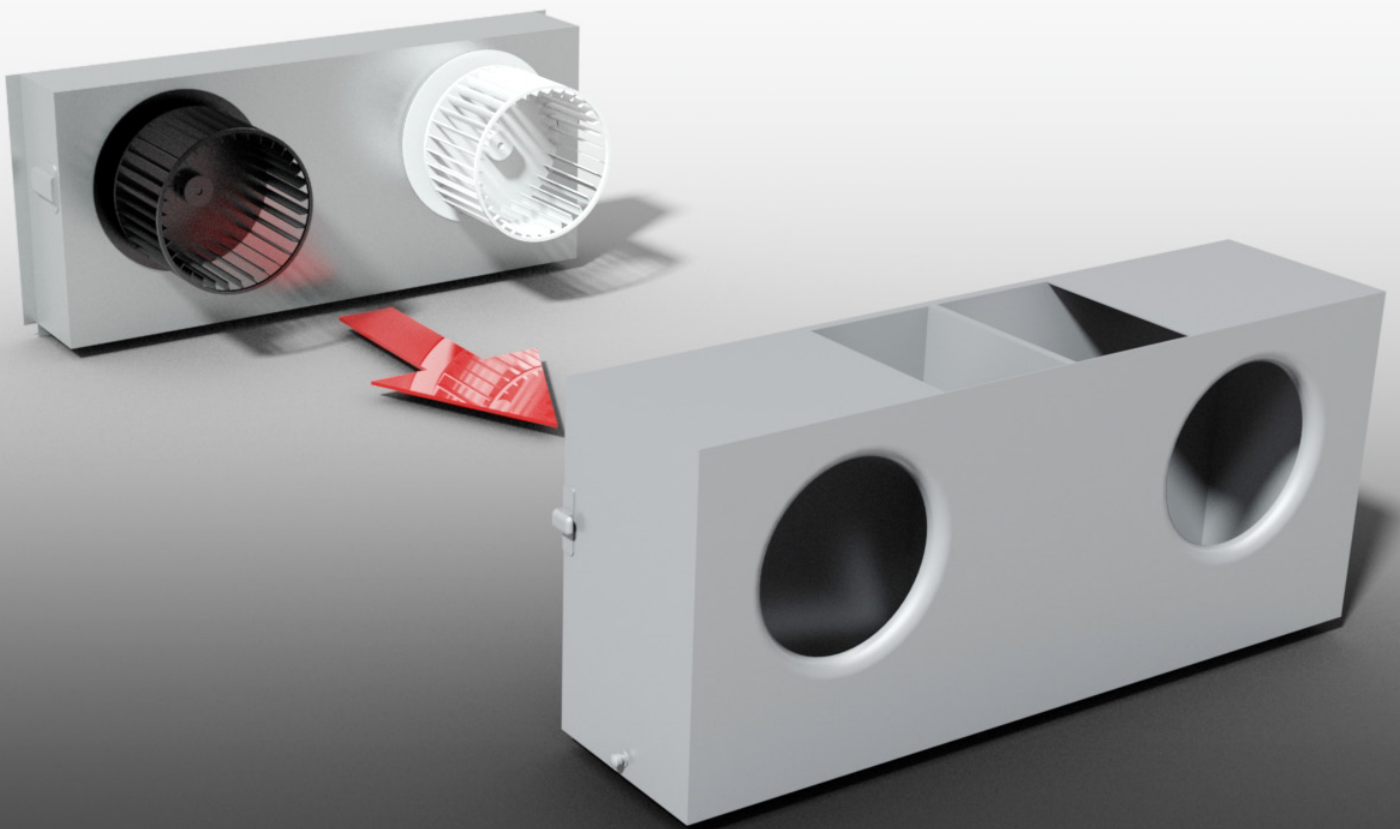
Step 1. Remove the E-Z Clean shield.

Be sure motor(s) is/are turned off before proceeding. The E-Z Clean blower shield is easily removed for cleaning by pulling the E-Z Clean blower shield toward the front of the hood. Be careful to keep the tray level if the hood has been recently used.



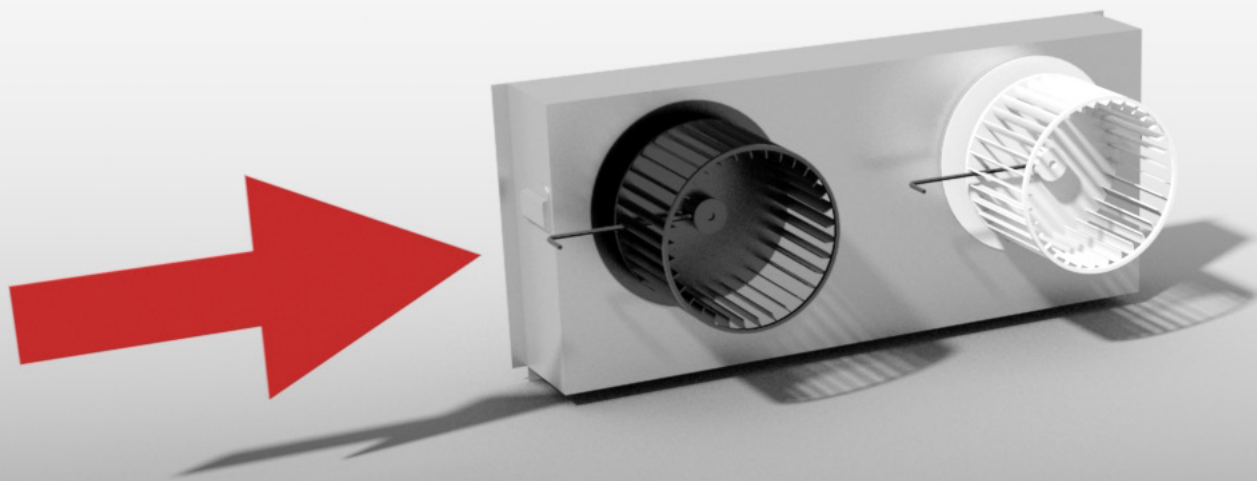
Step 2. Remove the E-Z Clean housing.

With the E-Z Clean shield removed, the blower housing is removed for cleaning by unsnapping the suitcase latches (one on each side of the housing). Then, pull the housing forward and gently “tip” it downward to clear the blower wheel(s).



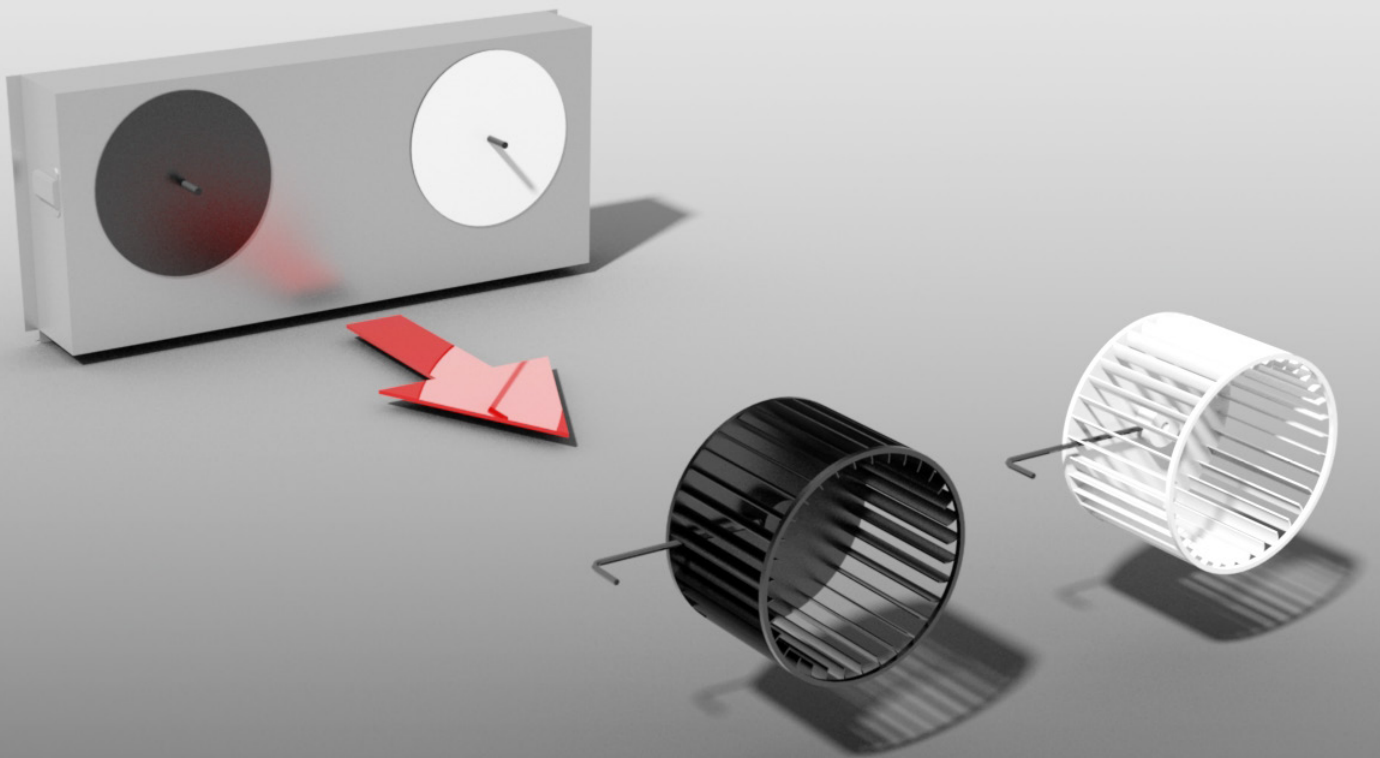
Step 3. Release the blower wheel.

Note the location of each blower wheel. The blower wheel can be removed by using the 1/8" hex wrench that was provided with the homeowner's manual. There is a small set screw on the side of the hub of the wheel that tightens up against a "flat" spot on the motor shaft. Insert the wrench through the blades of the blower wheel and into the set screw. The set screw must be turned 1/2 turn counterclockwise to free the blower wheel from the motor shaft. If the hood is more than five years old and the set screw has never been loosened, it may be difficult or even impossible to remove the blower wheel. A liquid penetrating oil may help you loosen the set screw, but it might prove more practical to clean the wheel without removing it from the motor shaft.



Step 4. Remove the blower wheel.

Once the set screw is loosened, pull the blower wheel forward slightly, then gently remove the blower wheel from shaft. Use caution to avoid bending or distorting the blower wheel and take care not to move or lose the metal balancing clips that may be affixed to the wheel. If the wheel is difficult to remove, the area where the motor shaft makes contact with the blower wheel hub may need to be sprayed with a common penetrating oil such as WD-40[®] and allowed to soak for a short time.



Step 5. Clean the parts and reassemble.

Clean each shield, damper, and/or blower housing in a sink of warm soapy water (liquid dish detergent) and let soak for a few minutes. Wash with a sponge or dishcloth, rinse, and let drain.

A soft bristle toothbrush with warm soapy water may be used to clean the blades on each blower wheel, or the wheel may be soaked in warm soapy water.

Reassemble in the opposite order of disassembly. When reinstalling the wheel onto the motor shaft, make sure the set screw makes direct contact with the “flat spot” on the motor shaft. Slide the blower wheel onto the motor shaft as far as it will go, making sure the back of the blower wheel does not touch the motor mount screws protruding from the motor.

If the blower wheel is too far back, it will rub the motor mount screws, and if it is too far forward, it will rub the inside of the blower housing. Adjust the blower wheel slightly to find the correct front-to-rear location. Tighten the set screw (clockwise) to lock the blower wheel in the correct position.

NOTE: For hoods that have more than one blower wheel, make sure that white blower wheels are matched up with white motor rings, and black blower wheels are matched up with black motor rings. The hood will not perform properly if blower wheels and motors are mismatched.

Once it's had time to completely dry, reinstall the E-Z Clean blower housing by gently tipping it over the blower wheel(s) and snap it in place via the suitcase latches (one on each side).

The E-Z Clean shield is reinstalled by aligning the shield guides with the mounting bolts on the blower housing (one on each side).